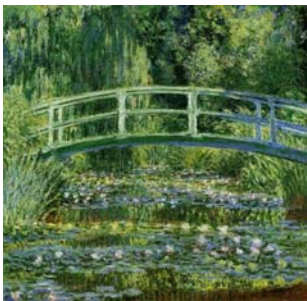




## CLAUDE MONET FRENCH ARTIST 1840 - 1926



Claude Monet (b. Nov. 14, 1840, Paris) was a French painter, initiator, leader and unwavering advocate of the Impressionist style. His devotion to the ideals of the movement was unwavering through his long career, and it is fitting that one of his pictures – *Impression: Sunrise* – gave the group its name.

Monet's youth was spent in Le Havre, where he first excelled as a caricaturist. He was converted to landscape painting by his early mentor Boudin, from whom he derived his love of painting outdoors. In 1859 he studied in Paris at the Atelier Suisse, following which he served two years of military service in Algiers. In 1862, he entered the studio of Gleyre in Paris, and there met the artists with whom he would form the nucleus of the Impressionist group.

From 1871 to 1878, Monet lived at Argenteuil, a village on the Seine near Paris, and here were painted some of the most famous works of the Impressionist movement. In 1883, he finally settled at Giverny, and after having experienced extreme poverty, began to prosper. He traveled widely, but his attention was increasingly focused on the water-garden he created at Giverny, which served as the theme for the series of paintings on Water-lilies that began in 1899 and grew to dominate his work completely.

In his final years, he was troubled by failing eyesight, but he painted until the end. He was enormously prolific, and for the bulk of his life tried in his work to capture the freshness of light outdoors. He always said that he painted "directly from nature," and he was dedicated to showing that even on the darkest, gloomiest day, an infinite variety of colors exist – a thought that could be microcosm of his life.

## For more on Monet:

<http://giverny.org/monet/biograph/>

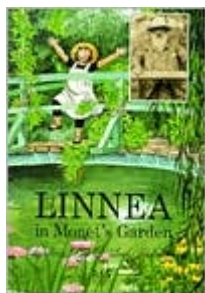
[http://www.artcyclopedia.com/artists/monet\\_claude.html](http://www.artcyclopedia.com/artists/monet_claude.html)

<http://www.ibiblio.org/wm/paint/auth/monet/>

<http://www.artquotes.net/masters/monet-biography.htm>

<http://www.biography.com/impressionists/monet-bio.jsp>

## And for the children, don't forget:



by [Cristina Bjork](#), [Lena Anderson](#) (Illustrator), [Joan Sandin](#) (Translator)

*A little girl visits the home and garden of Claude Monet at Giverny, France, and learns about the artist's paintings and his life. The illustrations include photographs of the painter and his family as well as examples of his work.*

## Monet Up Close:

The National Gallery of Art in Washington, DC is home to 26 works of Claude Monet

<http://www.nga.gov/cgi-bin/tsearch?artist=2-1726&title=>

## Special Monet Exhibition - MoMA

The Museum of Modern Art (MoMA) presents Monet's Water Lilies from September 13, 2009, to April 12, 2010, an installation that features the full group of late paintings by Claude Monet (1840-1926) in the collection for the first time since the Museum's reopening in 2004. In 1955 MoMA became the first public collection in the United States to acquire one of Monet's large-scale Water Lilies compositions. Since then, the history of their reception has been intertwined with the history of the Museum, both because of the water lilies' importance for scores of contemporary artists, and for the beloved position they hold for the general audience.

<http://www.moma.org/visit/calendar/exhibitions/963>